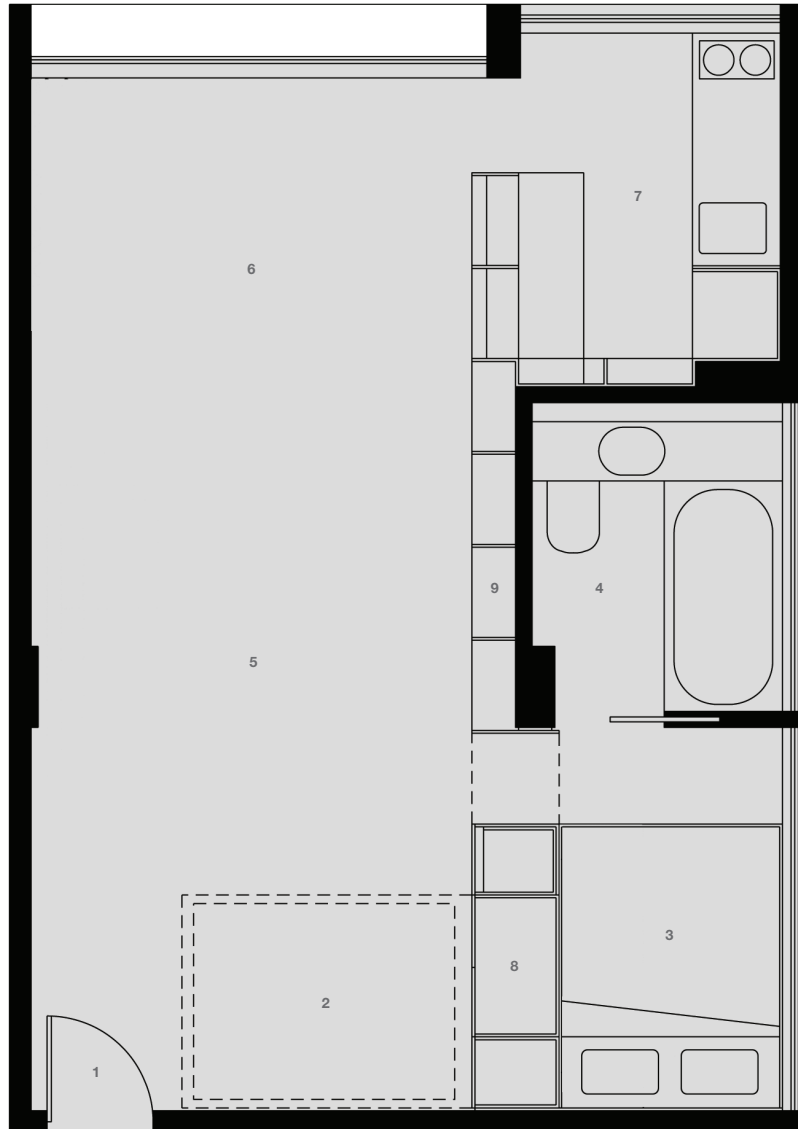


Floorplan

- | | | |
|-----------------|------------|-------------------------|
| 1 Entry | 4 Bathroom | 7 Kitchen |
| 2 Slide-out bed | 5 Living | 8 Wardrobe |
| 3 Bedroom | 6 Dining | 9 Storage 'living wall' |



0 1 2 5m



Architect: Anthony Gill Architects
Potts Point Apartment
32/40 Victoria Street
Potts Point
Sydney NSW 2011

Interior reinvention: 2010
Building architect: Harry Seidler & Assoc.
Strata title 'Gemini' complex of 58 units
Building one: 1961 (apt. 1-28)
Building two: 1969 (apt. 29-58)

1 bedroom, 1 bath, 1 car (off-street/unallocated)
Internal area (approx.) 38 sq m (409 sq ft)
External roof-top area (approx.) 280 sq m (3,014 sq ft)
Communal laundry facilities | Roof-top swimming pool
and sun-deck with 360° Sydney Harbour & city views