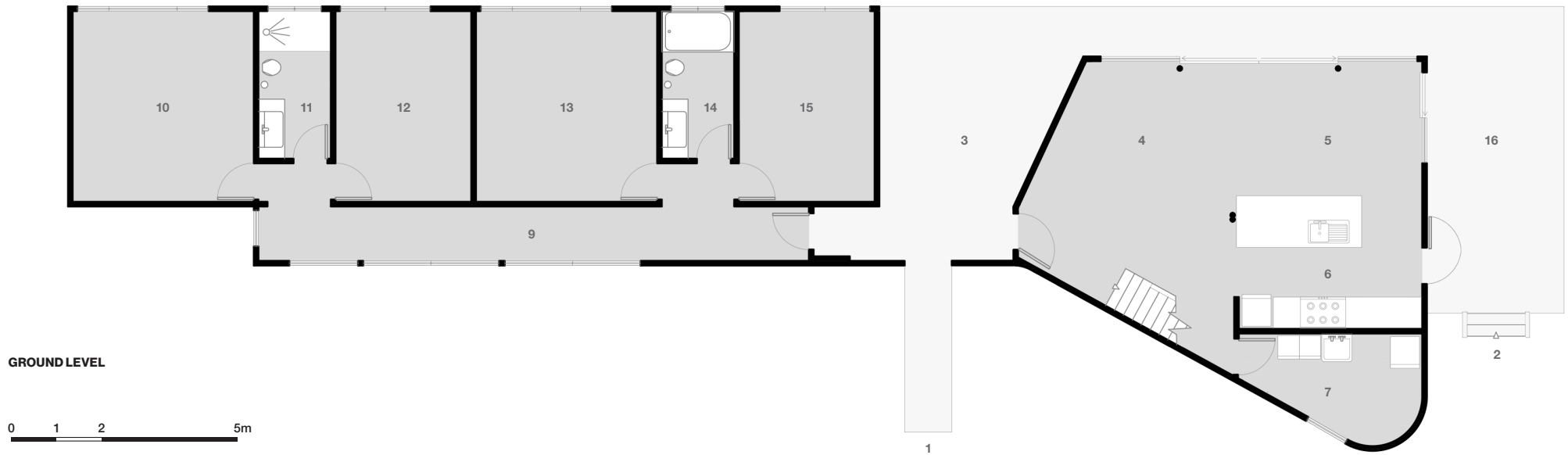
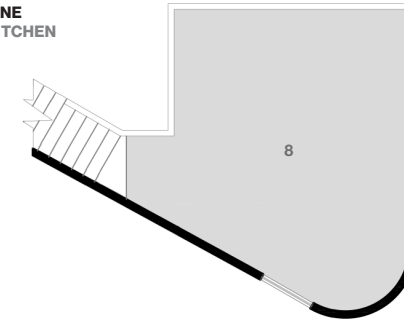


Floor Plan

MEZZANINE
ABOVE KITCHEN



GROUND LEVEL



Architect: Luigi Rosselli Architects
Way Way House
 Grassy Head Road, Way Way
 NSW 2447

Designed and Built: 2000/2 – 2002/4
Design Architect: Luigi Rosselli
 Build: Project Managed by Owner
 Alts + Adds: Saltwater Pool, 2008
 Land Zoning: Large Lot Residential

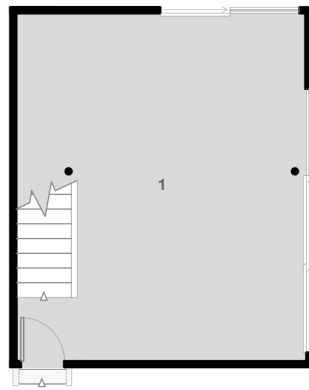
5 Bedroom, 2 Bath, 5+ Car (3 cars garaged)
Internal Living Area (approx.) 202 sq m (2,174 sq ft)
 House (approx.) 160 sq m (1,722 sq ft)
 Studio (approx.) 42 sq m (452 sq ft)
 Garage (approx.) 54 sq m (581 sq ft)
 Land: (approx.) 3.34 ha (8.24 ac)

- 1 Main Entry Bridge
- 2 Kitchen Entry
- 3 Covered Breezeway
- 4 Living Room
- 5 Dining Room
- 6 Kitchen

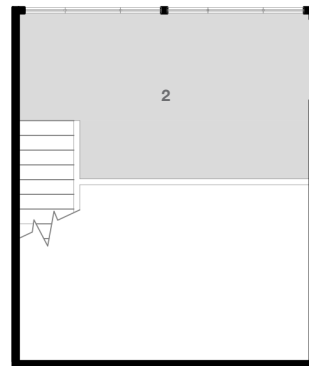
- 7 Laundry & Store
- 8 Mezzanine
- 9 Passage
- 10 Bedroom 1
- 11 Bathroom 1
- 12 Bedroom 2

- 13 Bedroom 3
- 14 Bathroom 2
- 15 Bedroom 4
- 16 Deck

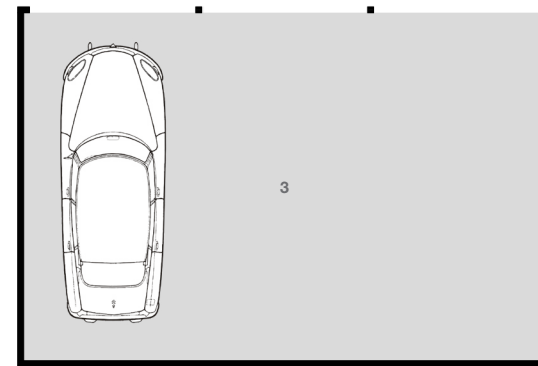




GROUND LEVEL



UPPER LEVEL



Architect: Luigi Rosselli Architects
Way Way House
 Grassy Head Road, Way Way
 NSW 2447

Designed and Built: 2000/2 – 2002/4
Design Architect: Luigi Rosselli
 Build: Project Managed by Owner
 Alts + Adds: Saltwater Pool, 2008
 Land Zoning: Large Lot Residential

5 Bedroom, 2 Bath, 5+ Car (3 cars garaged)
Internal Living Area (approx.) 202 sq m (2,174 sq ft)
 House (approx.) 160 sq m (1,722 sq ft)
 Studio (approx.) 42 sq m (452 sq ft)
 Garage (approx.) 54 sq m (581 sq ft)
 Land: (approx.) 3.34 ha (8.24 ac)

1 Studio / Creative Space / Reading Room / Study / Home Office / Yoga Room
2 Bedroom 5
3 Garage

