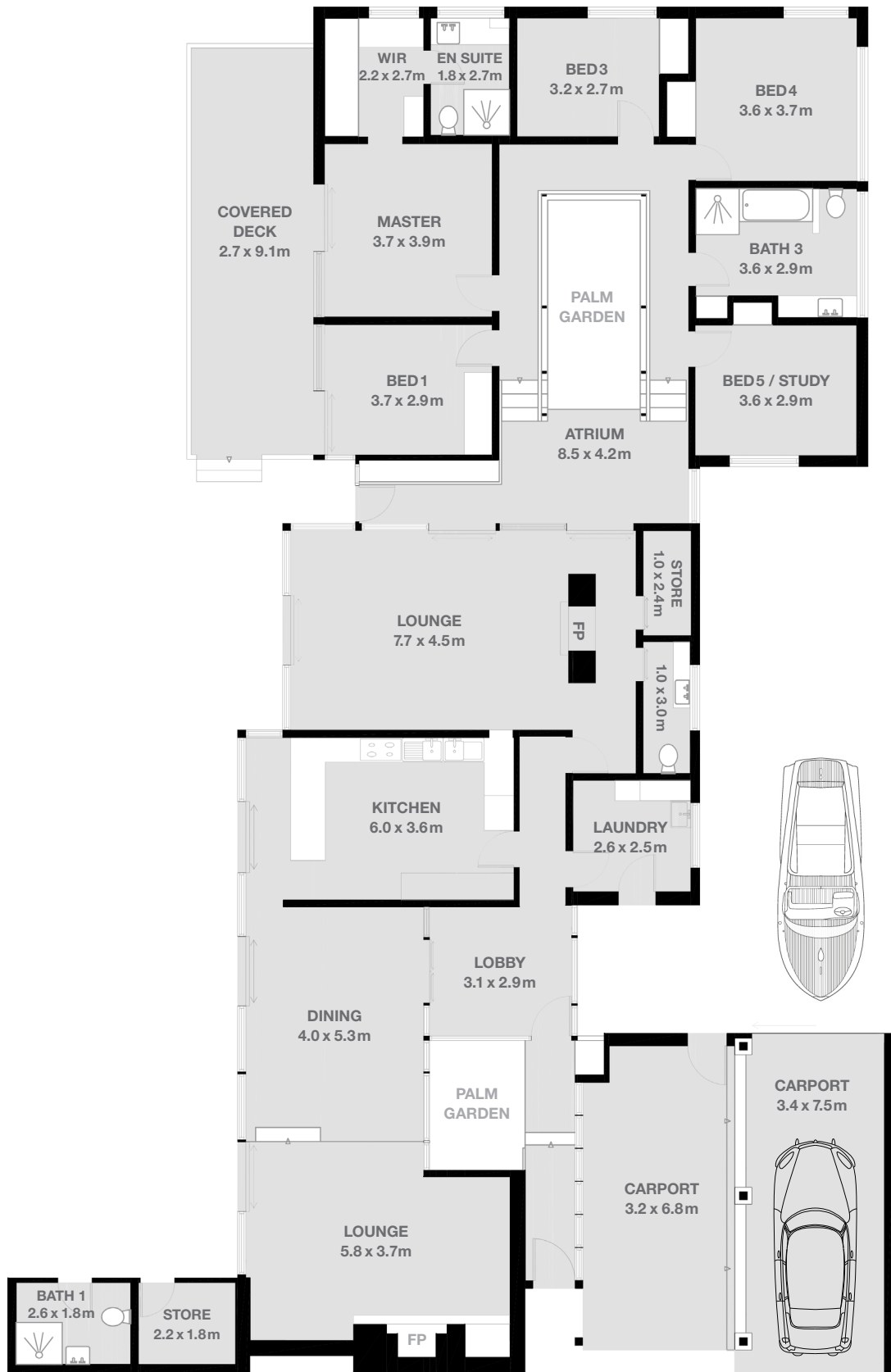


Floor Plan



Architect: Peter Swan
Welch House
 6 Towri Close
 St Ives NSW 2075

Designed: 1962
Built: 1963
 Style: Mid-Century Modern
 Master Builder: (Attrib) RJ
 Welch of Welch Bros. Pty Ltd

5 Bedroom, 3.5 Bath, 2 Car (Carport)
Internal area (approx.) 379 sq m (4,080 sq ft)
 Land area (approx.) 1,043 sq m (11,227 sq ft)
 • 10m saltwater pool
 • 18m entertaining terrace

