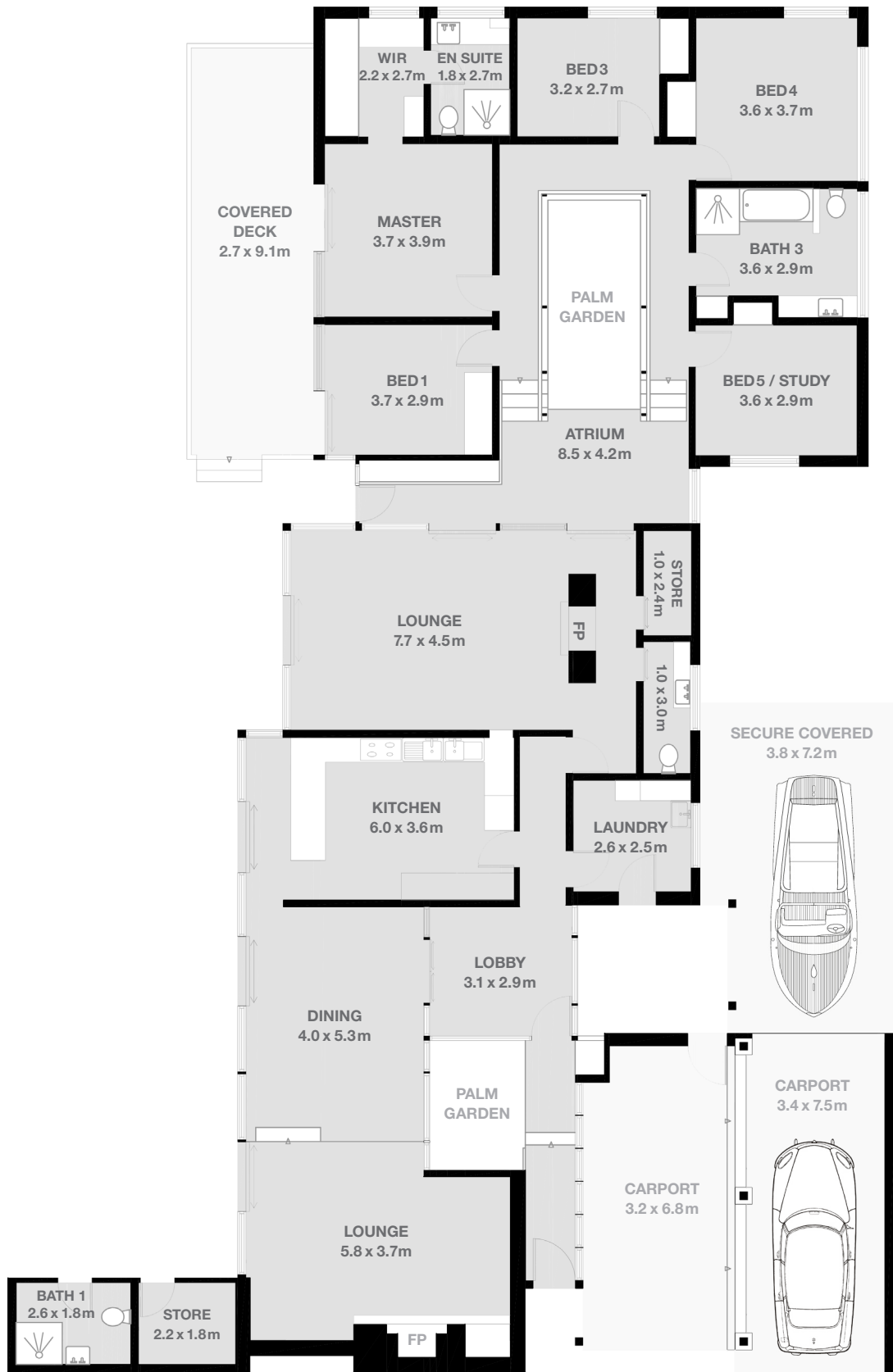


# Floor Plan



**Architect: Peter Swan**  
**Welch House**  
 6 Towri Close  
 St Ives NSW 2075

**Designed: 1962**  
**Built: 1963**  
 Style: Mid-Century Modern  
 Master Builder: (Attrib) RJ  
 Welch of Welch Bros. Pty Ltd

**5 Bedroom, 3.5 Bath, 3 Car**  
**Internal area (approx.) 294 sq m (3,165 sq ft)**  
 Land area (approx.) 1,043 sq m (11,227 sq ft)  
 • 10m saltwater pool  
 • 18m entertaining terrace



0 1 2 5m