

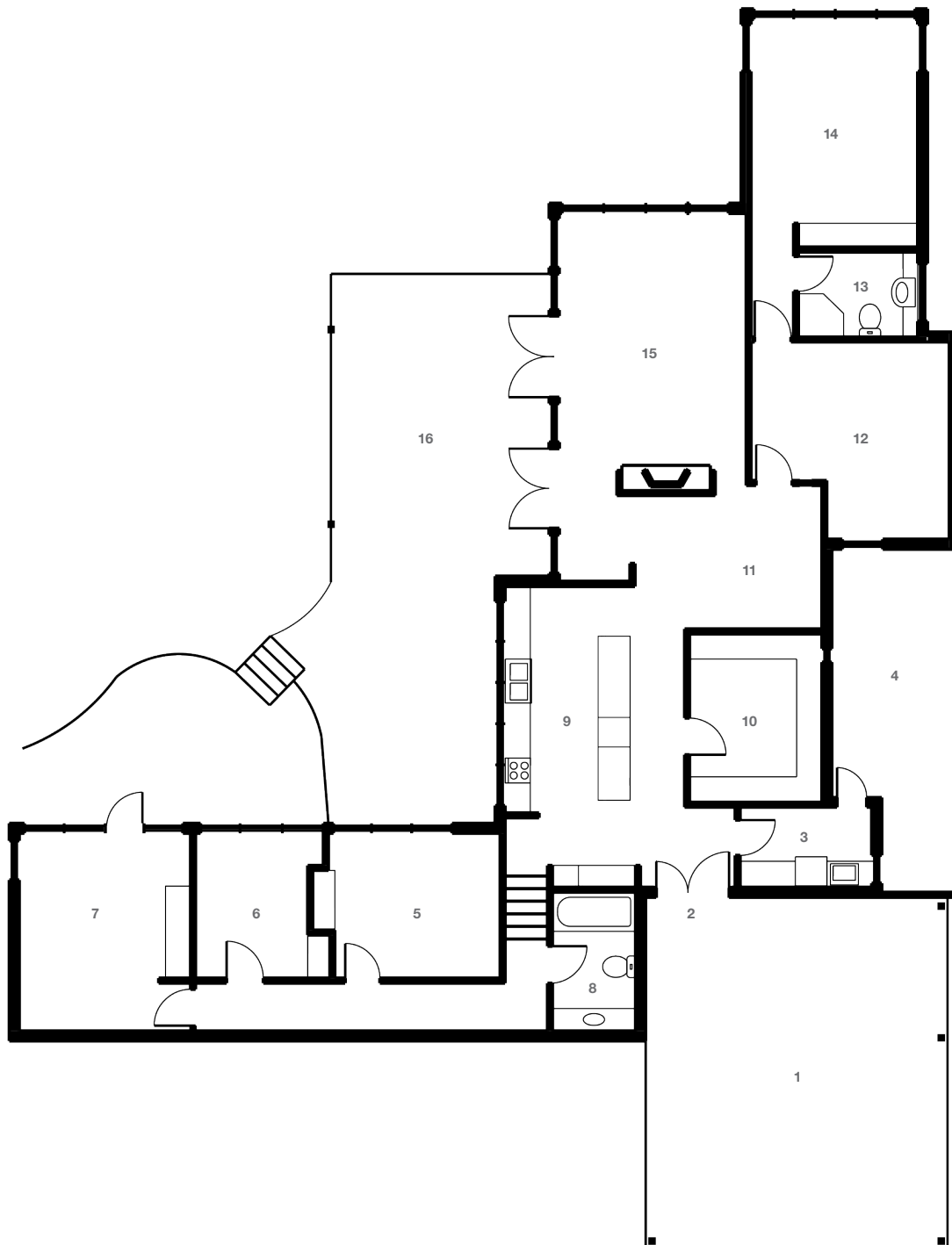
Floor Plan

1 Carport
2 Entry
3 Laundry
4 Courtyard

5 Bedroom [1]
6 Bedroom [2]
7 Bedroom [3]
8 Bathroom

9 Kitchen
10 Study
11 Dining
12 Retreat

13 Ensuite
14 Master Bedroom
15 Living
16 Covered Terrace



Architect: Howard and Edmondson
Edmondson House
17 Mildred Street, Warrawee
Sydney NSW 2074

Designed: 1965
Completed: 1967
Design Architect: Terry Edmondson
Firm: Townplanners

4 Bedroom, 2 Bath, 2 Car (Carport)
Internal area (approx.) 155 sq m
Land area (approx.) 1,186 sq m
Architectural style: Mid-Century, 'Sydney School'