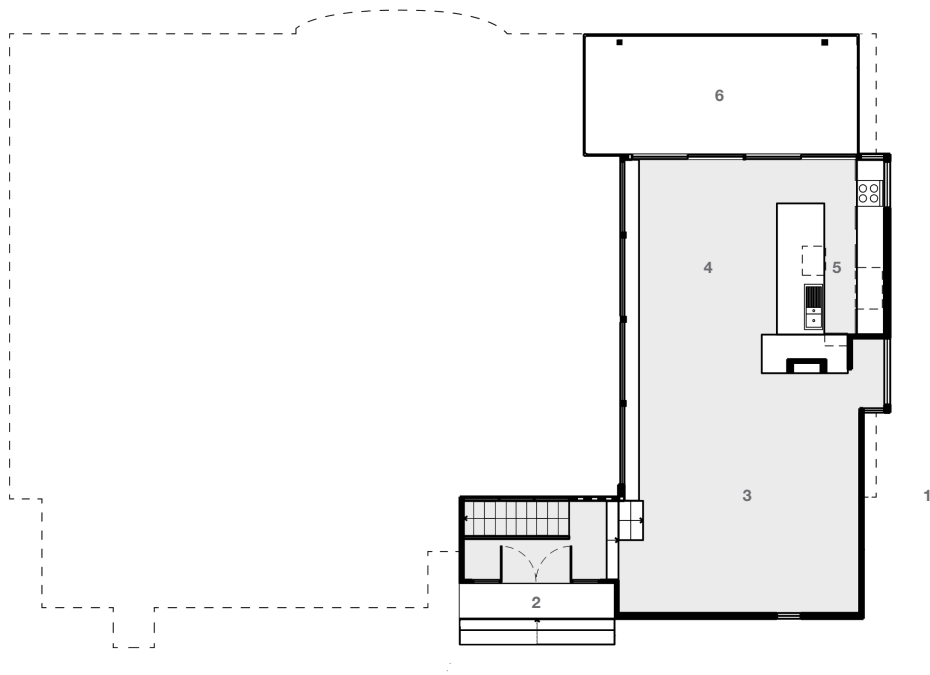
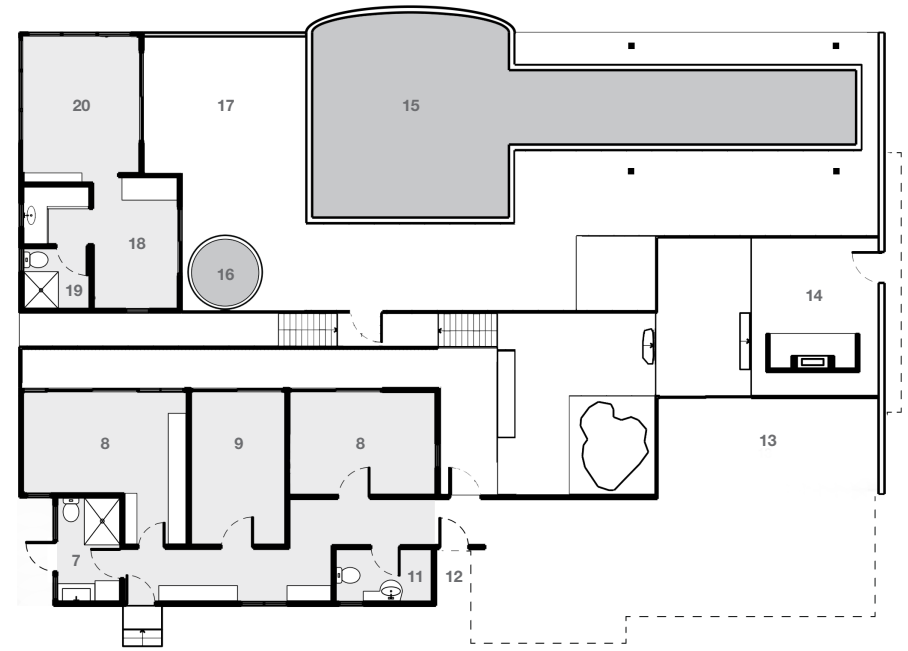


# Floor Plan



UPPER LEVEL



LOWER LEVEL



**Architect: Bruce Rickard & Assocs.**  
**Rickard House**  
 2 Cottage Point Road, Cottage Point  
 Sydney NSW 2073

**Designed and built: 1988 – 1990**  
**Design Architect: Bruce Rickard**  
 Alts + Adds: Genevieve Furzer, 2000  
 4 bedroom, 2 bath, 3 car (Private Off Street)  
 Approx. gross internal area : 179 sq m / 1,927 sq ft  
 Approx. gross external area : 52.5 sq m / 565 sq ft  
 Approx. gross land area: 623 sq m / 6,706 sq ft

- 1 Off Street Parking
- 2 Main Entry
- 3 Living Area
- 4 Dining
- 5 Kitchen
- 6 Covered Entertaining Area
- 7 Bathroom / Laundry
- 8 Bedroom 1
- 9 Bedroom 2
- 10 Bedroom 3
- 11 Guest Bathroom
- 12 Under Stairs Storage
- 13 Garden Storeroom
- 14 Pavilion
- 15 Lap & Swimming Pool
- 16 Spa
- 17 Entertaining Deck
- 18 Bedroom 4
- 19 Ensuite Bathroom
- 20 Living

