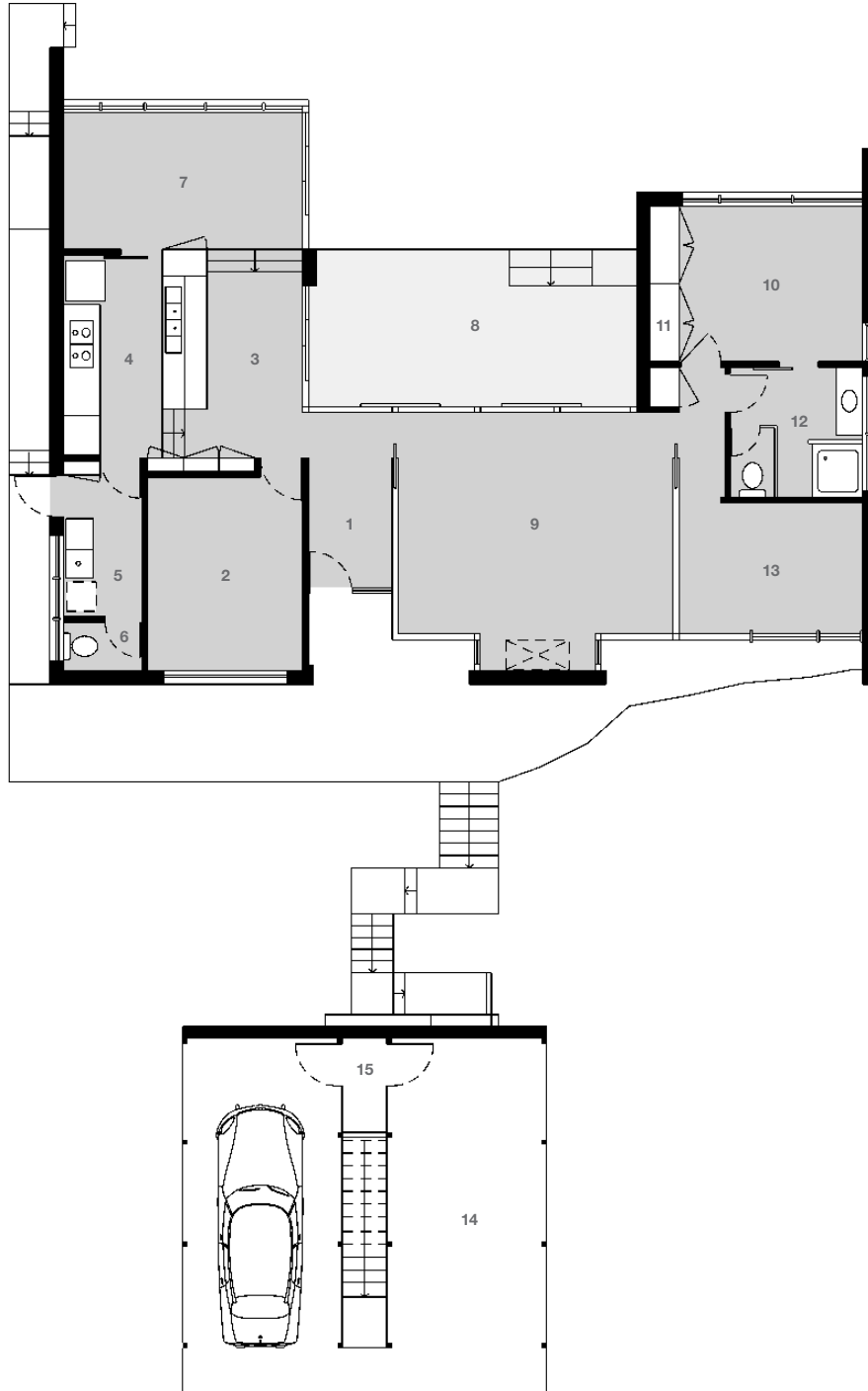


Floorplan

- | | | | | |
|---------------|-----------|------------|-----------------|----------------|
| 1 Entry Foyer | 4 Kitchen | 7 Sun Room | 10 Master Suite | 13 Bedroom [2] |
| 2 Bedroom [1] | 5 Laundry | 8 Terrace | 11 Wardrobe | 14 Carport |
| 3 Dinette | 6 WC | 9 Lounge | 12 Bathroom | 15 Store |



0 1 2 5m



**Architect: Payne & Hunt
Allum House**
28 Warrington Avenue
Killara, Sydney
NSW 2071

**Designed and built: 1966-68
Design Architect: John Hunt**
Builder: Ted Martin

3 bedroom, 1.5 bath, 2 car
Approx. gross int. / living area: 123 sq m / 1,324 sq ft
Approx. gross land area: 838 sq m / 9,020 sq ft

