

# Floorplan

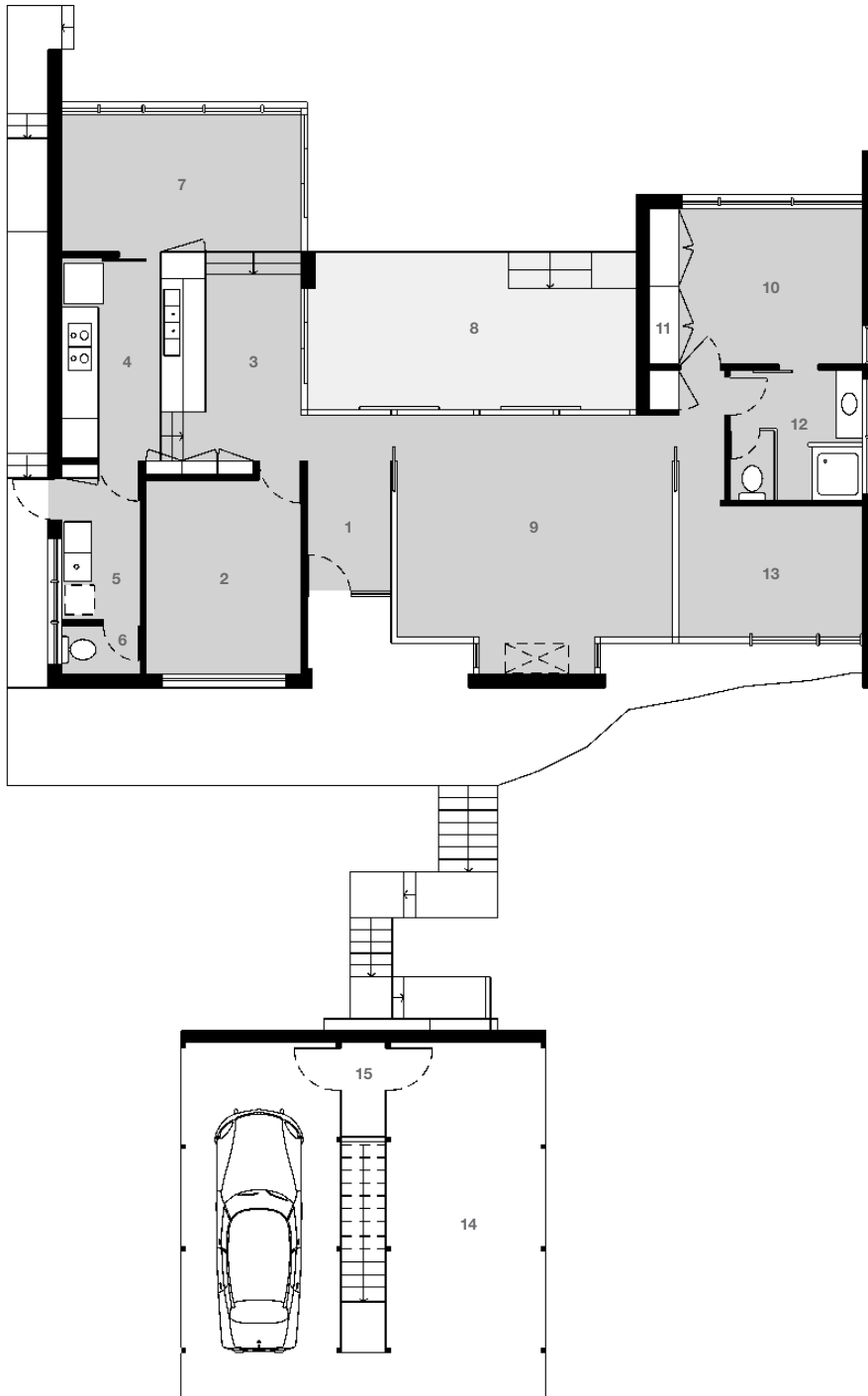
- 1 Entry Foyer
- 2 Bedroom [1]
- 3 Dinette

- 4 Kitchen
- 5 Laundry
- 6 WC

- 7 Sun Room
- 8 Terrace
- 9 Lounge

- 10 Master Suite
- 11 Wardrobe
- 12 Bathroom

- 13 Bedroom [2]
- 14 Carport
- 15 Store



0 1 2 5m



**Architect: Payne & Hunt**  
**Allum House**  
 28 Warrington Avenue  
 Killara, Sydney  
 NSW 2071

**Designed and built: 1966-68**  
**Design Architect: John Hunt**  
 Builder: Ted Martin

**3 bedroom, 1.5 bath, 2 car**  
 Approx. gross int. / living area: 123 sq m / 1,324 sq ft  
 Approx. gross land area: 838 sq m / 9,020 sq ft

