

Floorplan

1 Entry
2 Foyer
3 Atrium

4 Bedroom [1]
5 Living Room
6 Dining

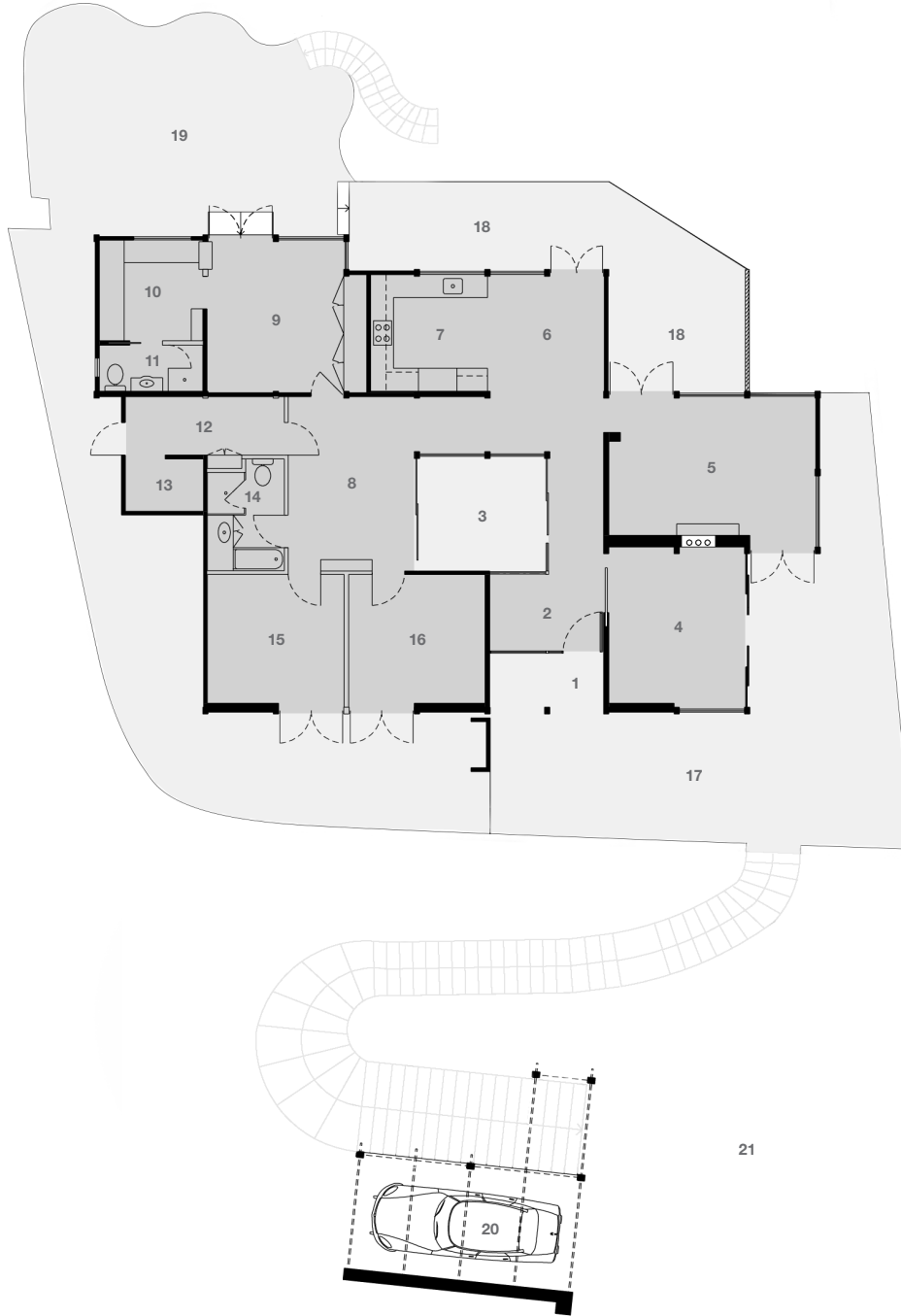
7 Kitchen
8 Play
9 Master Suite

10 Dressing / Study
11 Ensuite
12 Laundry

13 Store
14 Bathroom [3]
15 Bedroom [3]

16 Bedroom [4]
17 Courtyard
18 Outdoor Dining / Deck

19 Dining Terrace to Reserve
20 Carport
21 Off Street Parking



**Architect: John James
Cook House**
165 Deepwater Road
Castle Cove
Sydney, NSW 2069

**Designed and built: 1961-63
Design Architect: John James**
Builder: John James & trades

4 bedroom, 2 bath, 3 car (carport & 2 off street)
Approx. gross internal area: 156 sq m / 1,679 sq ft
Approx. gross external area: 83 sq m / 893 sq ft
Approx. gross land area: 761 sq m / 8,191 sq ft

