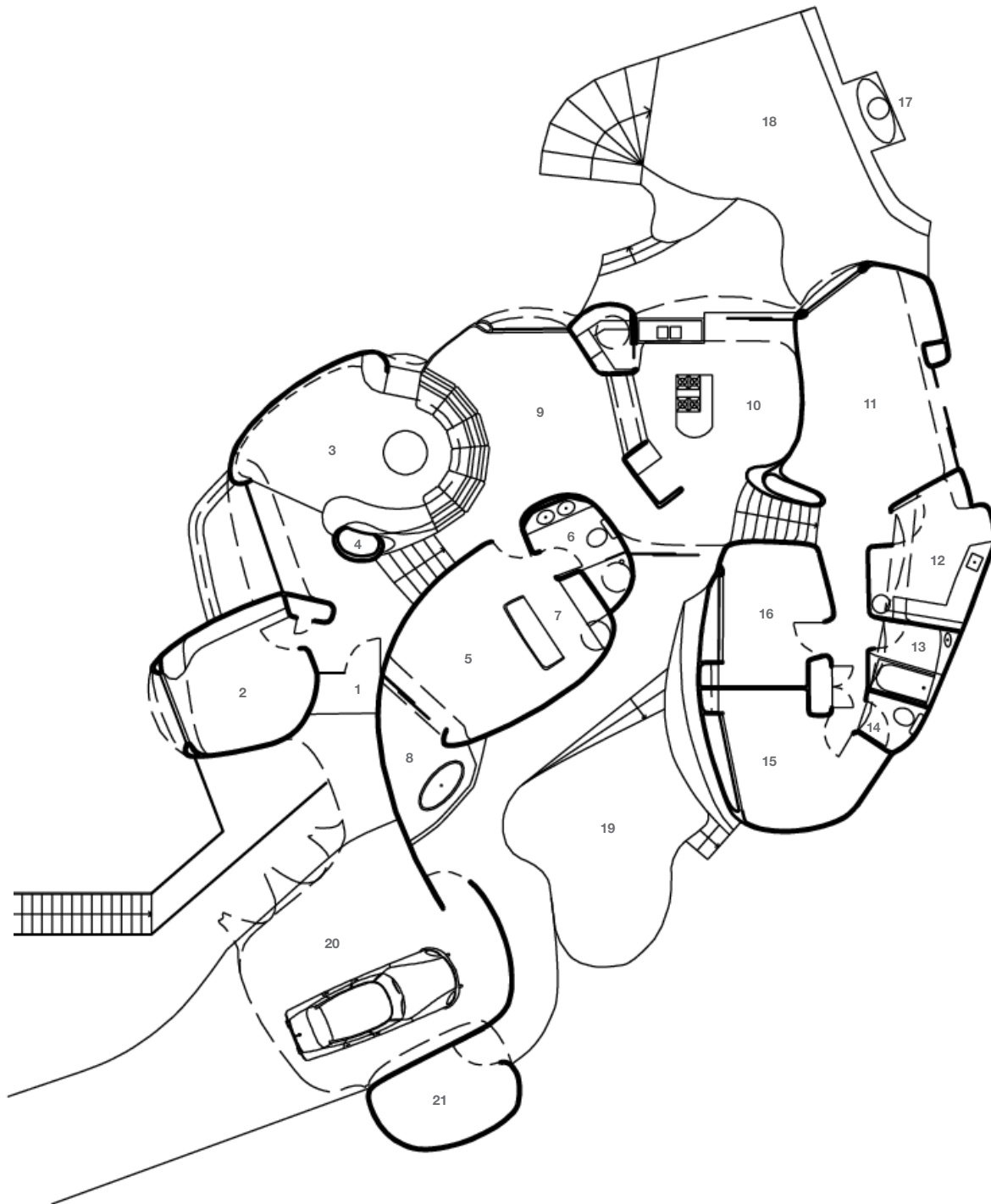


Floorplan

1 Entry	4 Fireplace	7 Dressing	10 Kitchen Living	13 Bathroom	16 Bedroom [3]	19 Outdoor Dining
2 Study	5 Master Suite	8 Bathing en Plein Air	11 Play	14 WC	17 Outdoor Fireplace	20 Carport
3 Living	6 Ensuite	9 Dining	12 Laundry	15 Bedroom [2]	18 Outdoor Living	21 Store



0 1 2 5m



Architect: David Hollander
Hollander House
 81 Grandview Drive, Newport
 Sydney NSW 2106

Designed and built: 1969-71
Design Architect: David Hollander
 Engineer: E. Perry
 Builder: B.A. Moore, Crows Nest

3 bedroom, study, 2.5 bath, 2 car (carport & off street)
Approx. gross int. / living area: 180 sq m / 1,938 sq ft
 Approx. gross external area: 45 sq m / 484 sq ft
 Approx. gross land area: 904 sq m / 9,731 sq ft

NB: WHILST WE TAKE EVERY CARE IN THE PURSUIT OF ACCURACY, THE PLAN SHOWN IS FOR GUIDANCE ONLY. ALL AREAS, MEASUREMENTS AND DISTANCES ARE APPROX. AND NOT TO SCALE. INTERESTED PARTIES ARE ADVISED TO MAKE THEIR OWN INDEPENDENT ENQUIRIES

WWW.MODERNHOUSE.CO THE SPECIALIST ESTATE AGENCY FOR ARCHITECT-DESIGNED RESIDENCES Email: sales@modernhouse.co Tel: **1300 814 768**