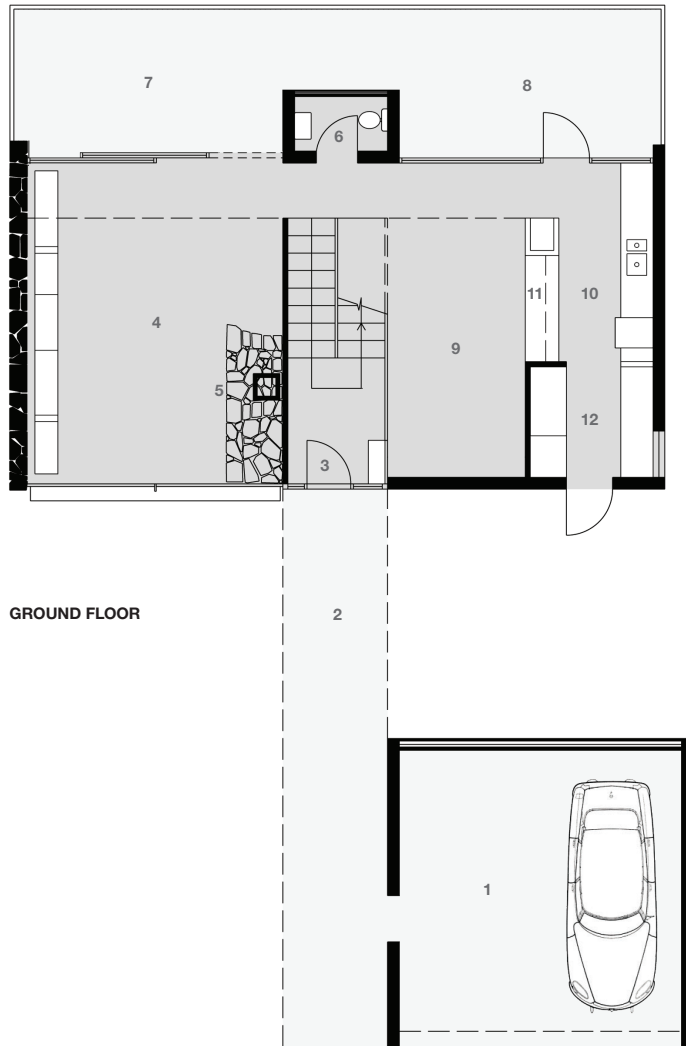
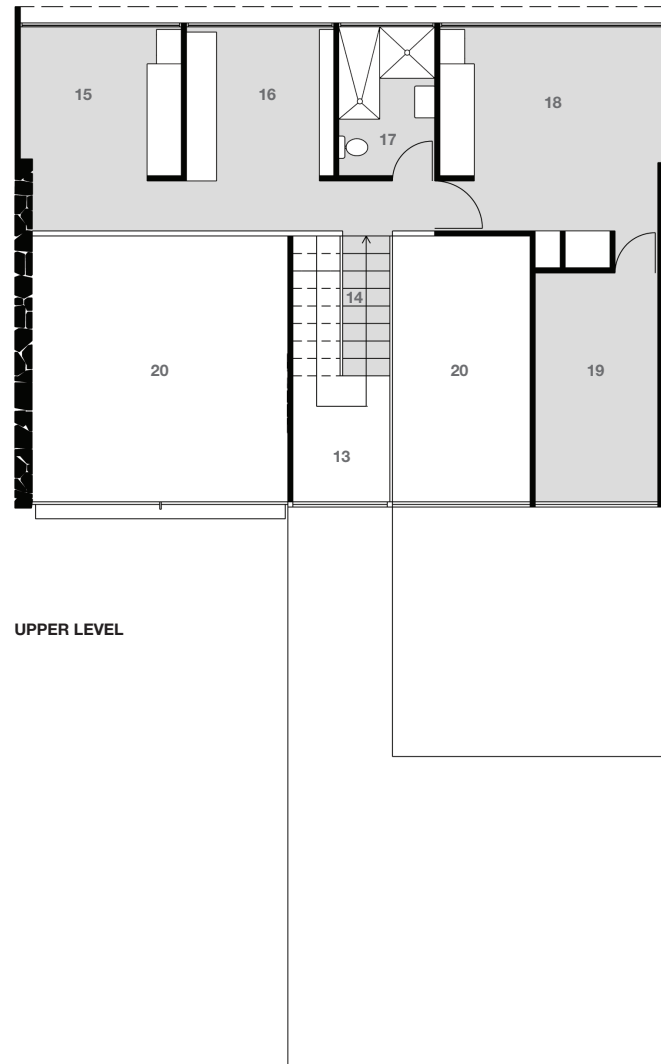


Floor Plan



GROUND FLOOR



UPPER LEVEL



Architect: Harry Seidler Architect
Thurlow House
 9 Stuart Crescent, Blakehurst
 Sydney NSW 2221

Designed and built: 1951 – 52
Design Architect: Harry Seidler
 2 bedroom, 1 study, 1.5 bath, 2 car (garage)
 Approx. gross internal area: 140 sq m / 1,507 sq ft
 Approx. gross external terrace area: 33 sq m / 355 sq ft
 Approx. gross land area: 1,366 sq m / 14,380 sq ft

- | | | | |
|--------------------------|-------------------------|-----------------------|-----------------------|
| 1 Garage | 6 Washroom | 11 Servery | 16 Study |
| 2 Entrance Bridge | 7 Living Terrace | 12 Laundry | 17 Bathroom |
| 3 Entrance | 8 Dining Terrace | 13 Landing | 18 Bedroom [2] |
| 4 Living Room | 9 Dining Room | 14 Stairs | 19 Store |
| 5 Fireplace | 10 Kitchen | 15 Bedroom [1] | 20 Void |

