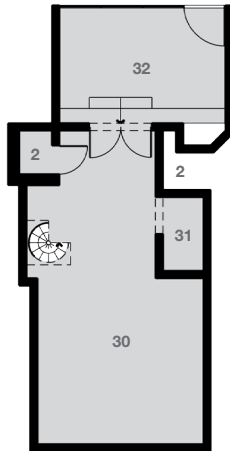


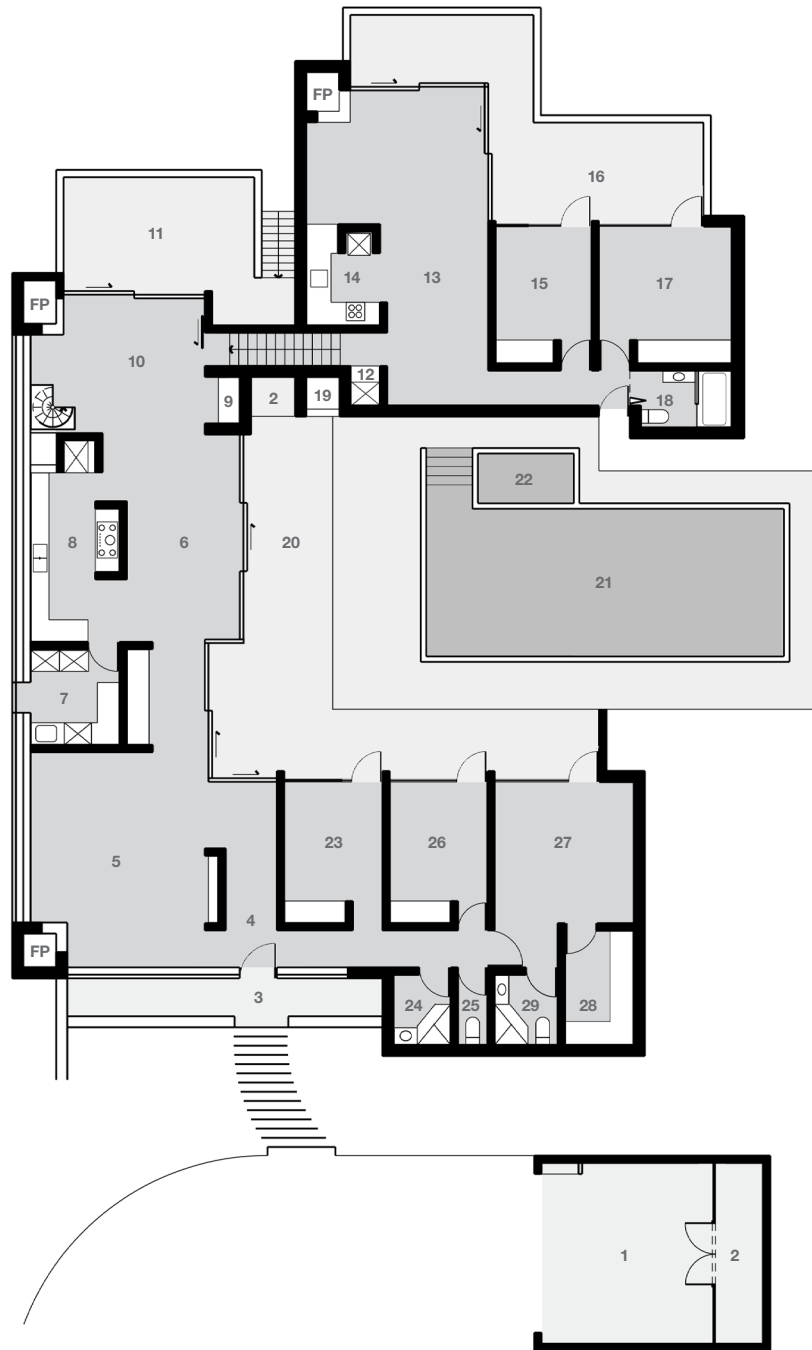
Floorplan

- | | | | | | | |
|-----------------|--------------------|-------------------|----------------------|----------------|-------------------|---------------------|
| 1 Carport | 6 Living [2] | 11 Dining Terrace | 16 Terrace | 21 Pool | 26 Bedroom [4] | 31 Bar |
| 2 Store | 7 Laundry & Pantry | 12 Laundry | 17 Bedroom [2] | 22 Spa | 27 Master Bedroom | 32 Sun-room / Study |
| 3 Entry Terrace | 8 Kitchen [1] | 13 | 18 Bathroom | 23 Bedroom [3] | 28 Dressing Room | |
| 4 Entry Lobby | 9 Study Nook | 14 Kitchen [2] | 19 Built-in Barbecue | 24 Bathroom | 29 Master Ensuite | |
| 5 Living | 10 Dining | 15 Bedroom [1] | 20 Living Terrace | 25 WC | 30 Media / Rumpus | |

LOWER GROUND



GROUND FLOOR



Architect: Philip Cox & Assoc.
Hawkins Residence
 19 Norma Crescent
 Cheltenham
 Sydney NSW 2119

Designed and built: 1968
Design Architect: Philip Cox
 Builder: Jim Hawkins

5 bedroom, study, 3.5 bath, 2 car (carport)
Internal area (approx.) 285 sq m (3,068 sq ft)
 External terrace area (approx) 130 sq m (1,399 sq ft)
 Land area (approx.) 1,186 sq m (12,766 sq ft)
 Land zoning: Residential

