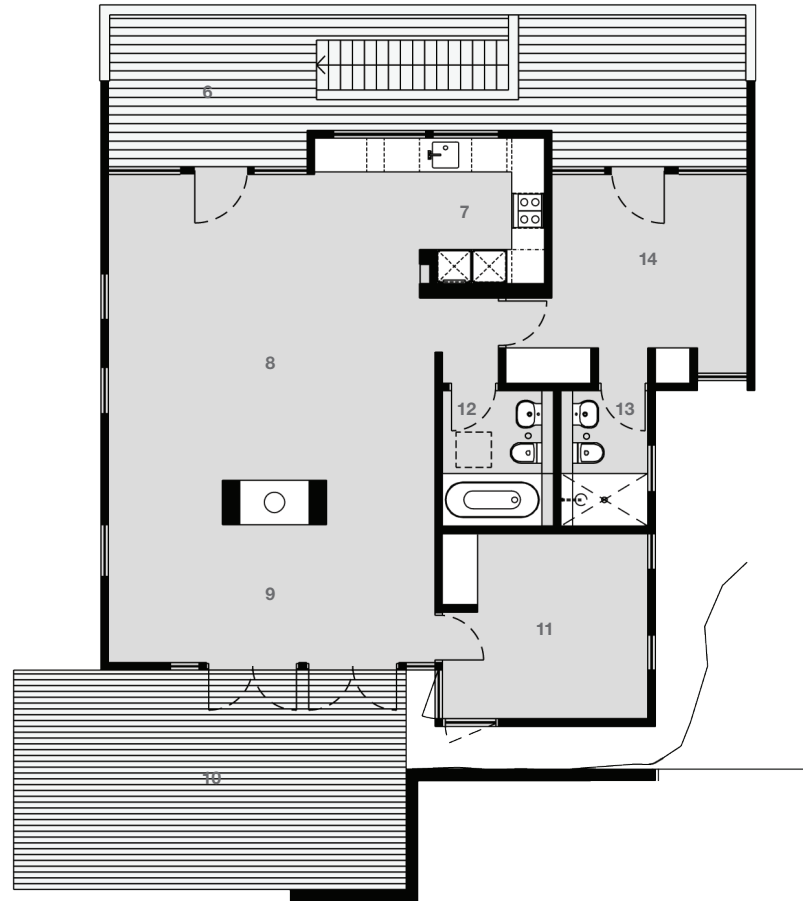
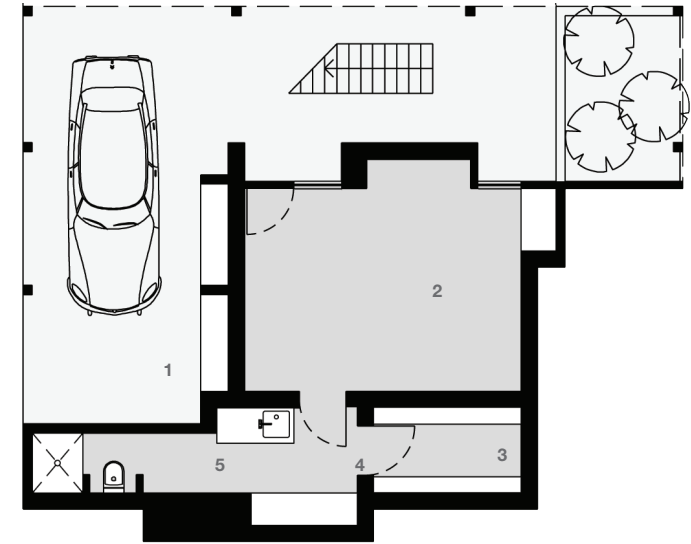


Floorplan

UPPER LEVEL



GROUND LEVEL



Architect: Brian Mazlin
Pearl Beach House
 7 Green Point Road
 Pearl Beach NSW 2256

Designed + Built: 1963
Design Architect: Brian Mazlin
 Restoration: 2010
 Restoration + Interior Design: TFAD

3 Bedroom, 3 Bath, 1 Car (Carport)
Internal area (approx.) 126.5 sq m (1,362 sq ft)
 (Carport not inc.)
 External deck area (approx.) 53 sq m (570 sq ft)
 Land area (approx.) 1,303 sq m (14,025 sq ft)

1 Garage
 2 Bedroom [1]
 3 Store
 4 Laundry
 5 WC + Shower

6 Deck
 7 Kitchen
 8 Living
 9 Dining
 10 Outdoor Entertainment

11 Bedroom [2]
 12 Bathroom
 13 Ensuite
 14 Bedroom [3]

