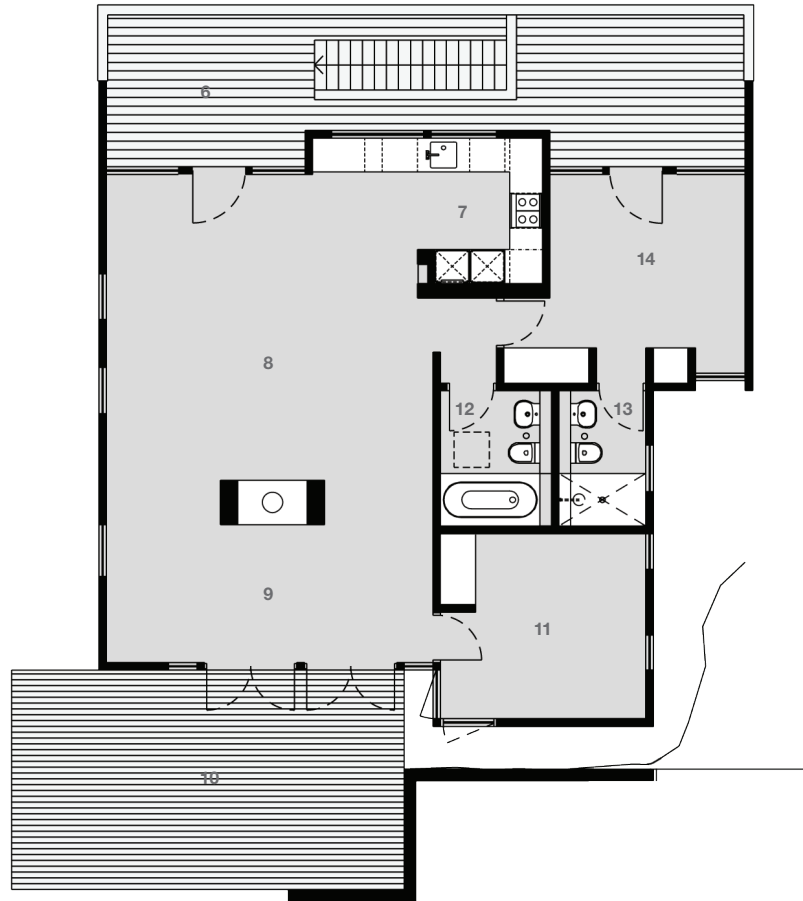
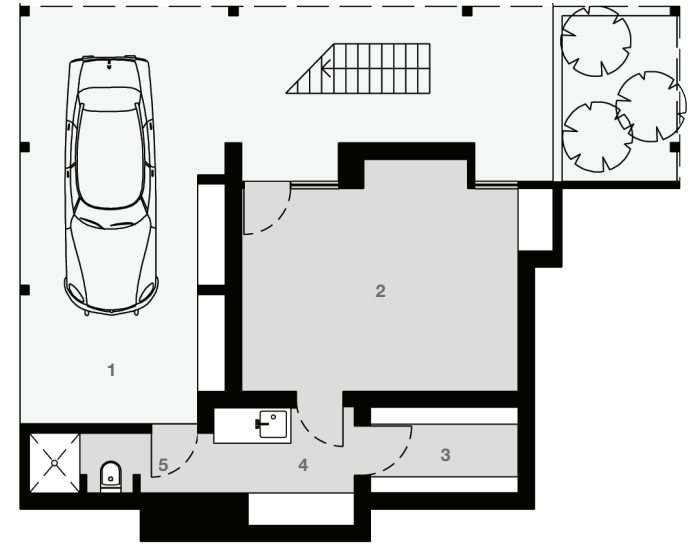


Floor Plan

UPPER LEVEL



GROUND LEVEL



Architect: Brian Mazlin
Pearl Beach House
 7 Green Point Road
 Pearl Beach NSW 2256

Designed + Built: 1963
Design Architect: Brian Mazlin
 Restoration: 2010
 Restoration + Interior Design: TFAD

3 Bedroom, 3 Bath, 3 Car (1 Carport, 2 Tandem)
Internal area (approx.) 126.5 sq m (1,362 sq ft)
 (Carport not inc.)
 External deck area (approx.) 66 sq m (710 sq ft)
 Land area (approx.) 1,303 sq m (14,025 sq ft)

1 Garage
2 Bedroom [1]
3 Store
4 Laundry
5 WC + Shower

6 Deck
7 Kitchen
8 Living
9 Dining
10 Outdoor Entertainment

11 Bedroom [2]
12 Bathroom
13 Ensuite
14 Bedroom [3]

