

Floor Plan

- 1 Entry
- 2 Living
- 3 Cook
- 4 Pantry

- 5 Family / Breakfast
- 6 Deck
- 7 Dine
- 8 Store

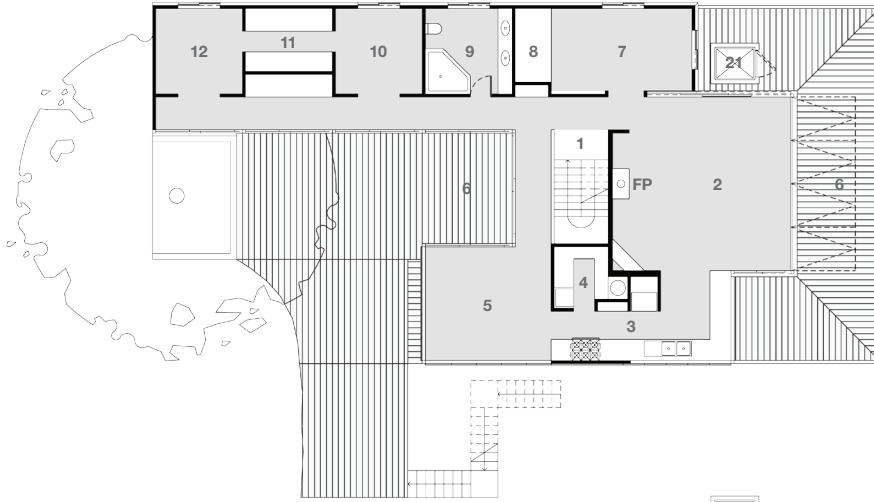
- 9 Bathroom
- 10 Bedroom [1]
- 11 Walk-in-wardrobe
- 12 Bedroom [2]

- 13 WC
- 14 Walkway
- 15 Bathroom
- 16 Wardrobe

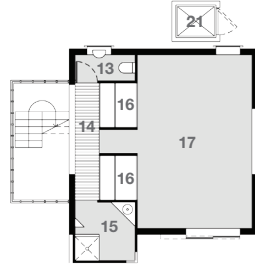
- 17 Master Bedroom
- 18 Laundry
- 19 Bathroom
- 20 Playroom / Home Office

- 21 Service Lift
- 22 Driveway

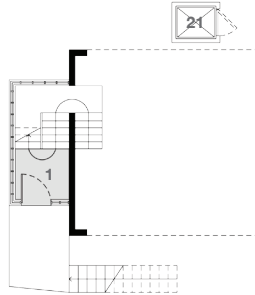
UPPER LEVEL



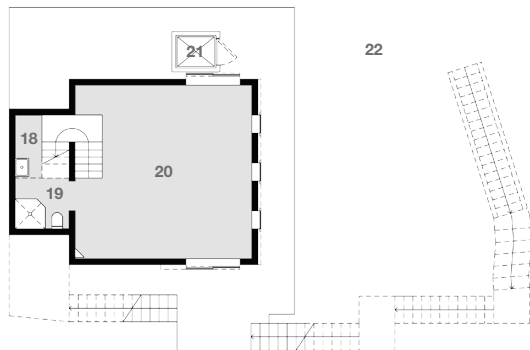
MID LEVEL



MID ENTRY



LOWER LEVEL



0 1 2 5m



Architect: Stutchbury and Pape
Treetop House
 33 Hilltop Road
 Avalon, Sydney
 NSW 2107

Designed and Built: 1991
Design Architect: Peter Stutchbury
 Landscape Architect: Phoebe Pape
 Engineer: Eva Tihanyi
 Builder: Pocklington + Crooks

3 Bedroom, 3.5 Bath, 1 Car
Internal area (approx.) 220 sq m (2,368 sq ft)
 (stairwell not inc.)
 External deck area (approx.) 114 sq m (1,227 sq ft)
 Land area (approx.) 1,071 sq m (11,528 sq ft)