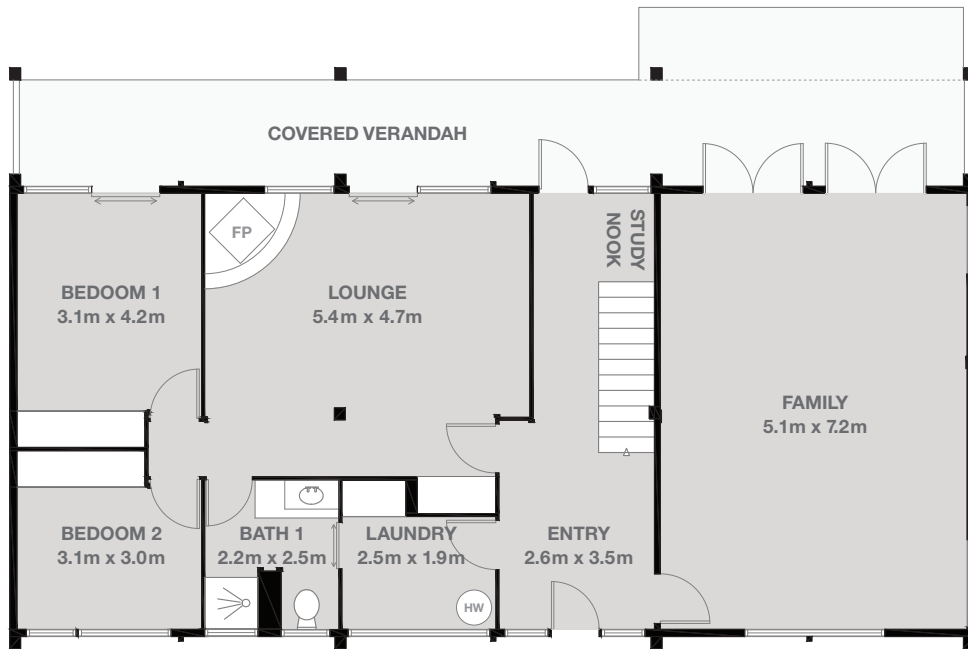
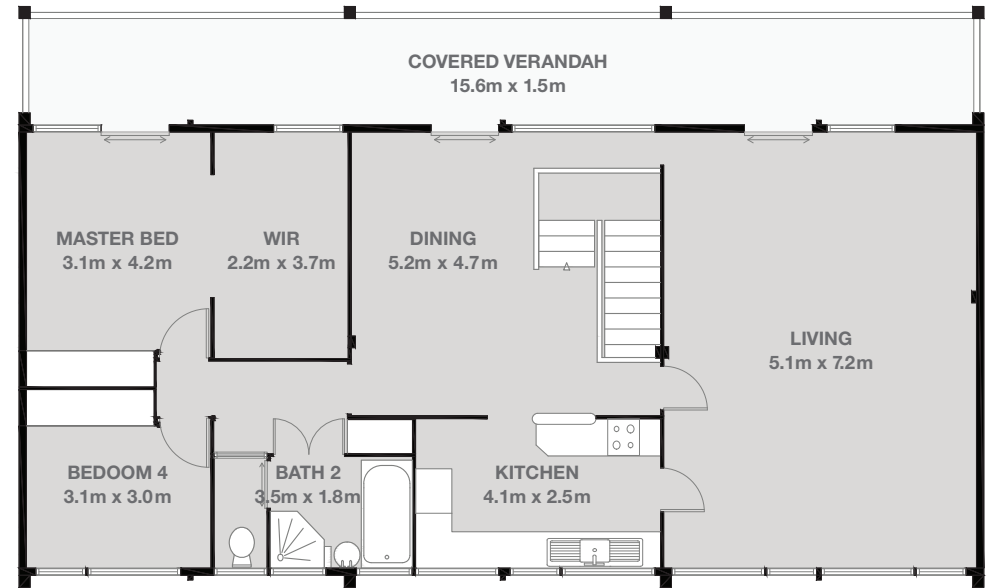


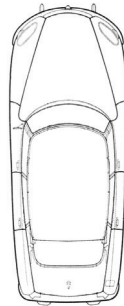
Floor Plan



GROUND FLOOR



FIRST FLOOR



Cedar House
4 Bed, 2 Bath, 2 Car
 3 Clwydon Close
 Belrose NSW 2085

Designed and Built: circa 1969
Building System: Lockwood
 Internal area (approx.) 220 sq m (2,368 sq ft)
 Verandah area (approx.) 52 sq m (560 sq ft)
 Land area (approx.) 695.6 sq m (7,487 sq ft)

- Large family home with beautiful ambience in lush garden setting
- Recently completed renovation no further work - move straight in
- Cul-de-sac location

- Large modern-style floor plan
- Three oversized living areas
- Four bedrooms, all with built-ins
- Large covered outdoor living areas
- 10m kidney-shaped, saltwater pool

- North to rear & all main living spaces
- All rooms to rear open to covered verandahs
- Winter sun in & mitigate Summer sun
- Louvres for cross ventilation control
- Slow combustion wood burning stove

