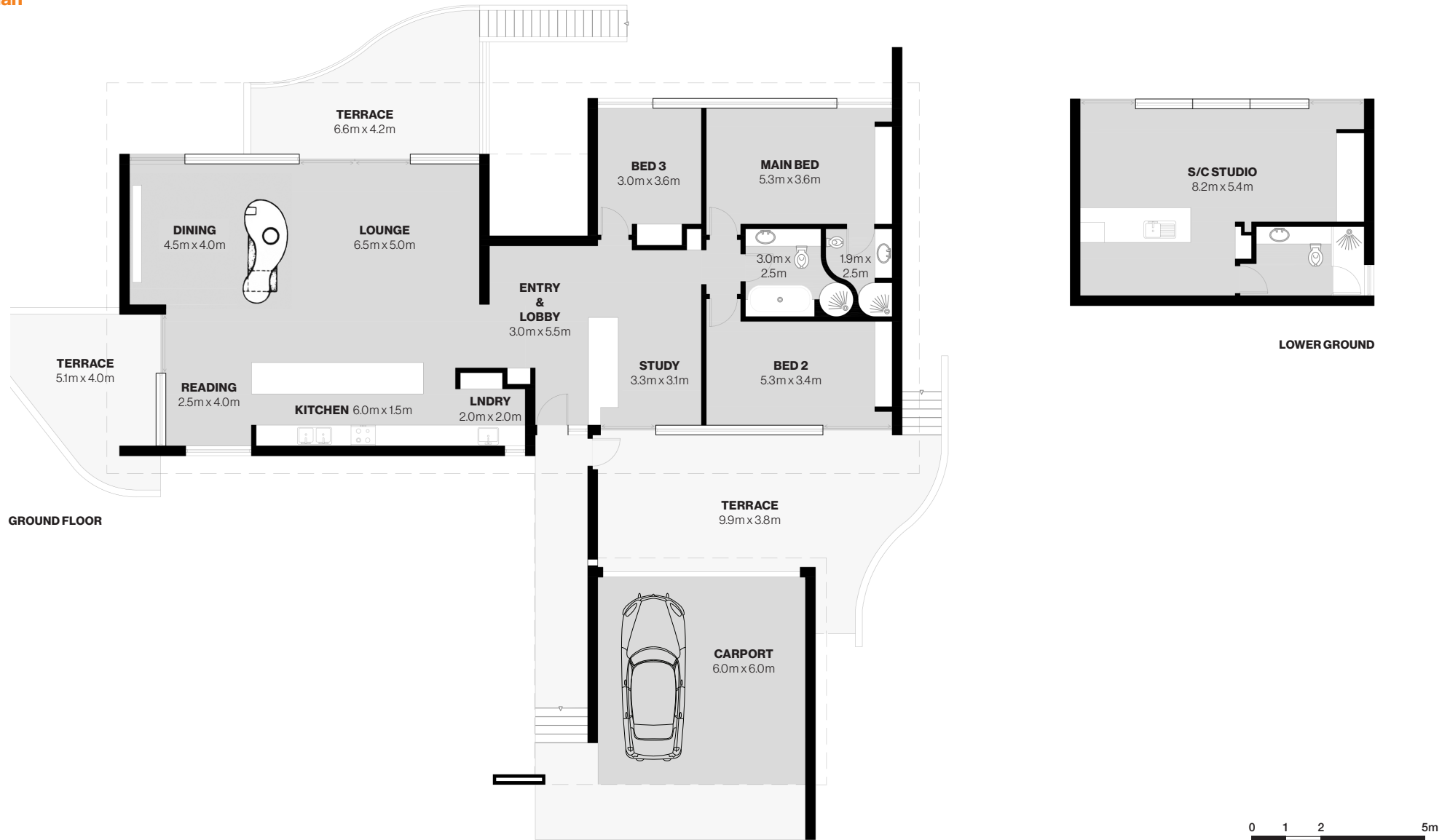


Floor Plan



**Architect: Harry Seidler & Associates
G. Cohen House**
19–21 Cynthea Road
Palm Beach NSW 2108

Designed & Built: 1991–1994
Design Architect: Harry Seidler
Project Architect: Greg Holman
Structural Engineer: Birzulis Associates
Contractor: Herbert Groth Pty Ltd

Main Residence:
3 Bedroom, Study, 2 Bath, 2 Car (Carport)
Approx. gross internal area: 173 sq m / 1,862 sq ft
Self-contained Studio:
1 Bedroom, 1 Bath, Kitchenette
Approx. gross internal area: 44 sq m / 474 sq ft

Double Block:
19 & 21 Cynthea Road | Lot 1 DP 831829
Approx. gross land area: 1,410 sq m / 15,177 sq ft
Block Dimensions:
28.7m frontage | 38.0m rear | 41.0m western | 42.9m eastern
Zoning: Environmental Living | Heritage Id: 2087303 (Local)

