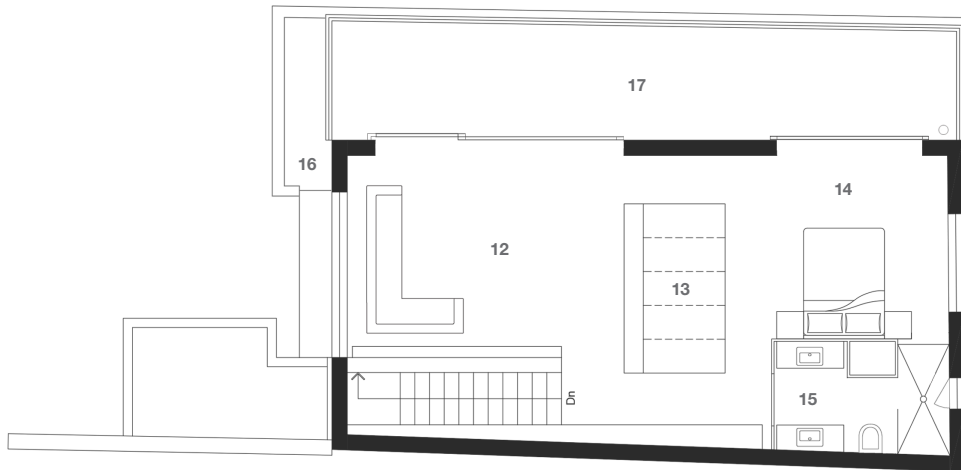
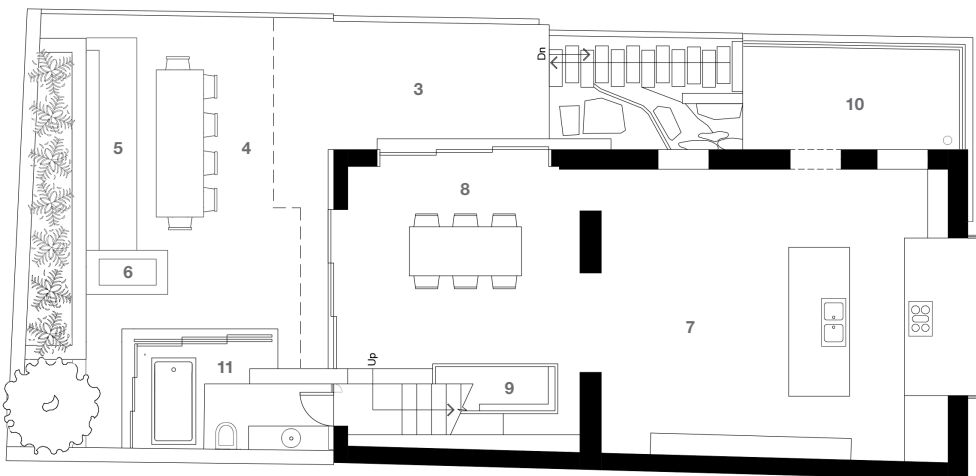




SECOND FLOOR

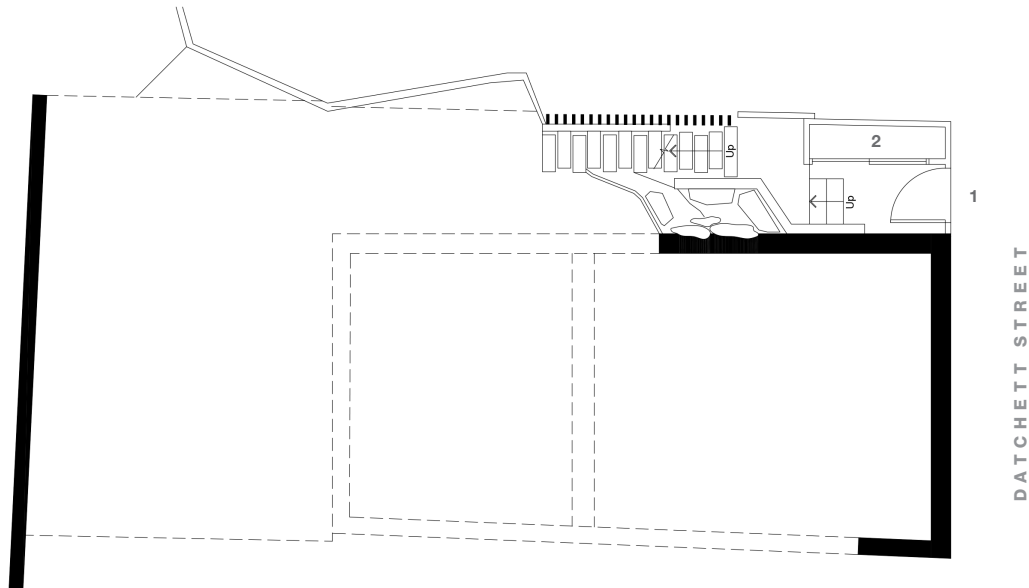


FIRST FLOOR



GROUND ENTRY

- 1 Entry
- 2 Store
- 3 Viewing Deck
- 4 Entertaining Deck
- 5 Built-in Bench Seating
- 6 BBQ
- 7 Kitchen
- 8 Dining
- 9 Built-in Lounge
- 10 Sunroom / Guest
- 11 Bathhouse
- 12 Living Room
- 13 Wardrobes
- 14 Bedroom
- 15 En suite
- 16 Balcony +
Roof Access
- 17 Covered Verandah
/ Meditation
/ Yoga
/ Reading
/ Study



0 1 2 5m



Architect: Brian Zulaikha of Tonkin Zulaikha Greer + Drew Heath Architect
Zulaikha Laurence House
24 Datchett St, Balmain East NSW 2067

Team
Brian Zulaikha, Drew Heath,
Elizabeth Metcalfe, Ross Langdon
Structural engineer: Simpson Design
Planner: Sandra Robinson

Awards
2007 RAI National Award for Residential
Architecture - Houses
2007 RAI NSW Residential Alterations
and Additions Award