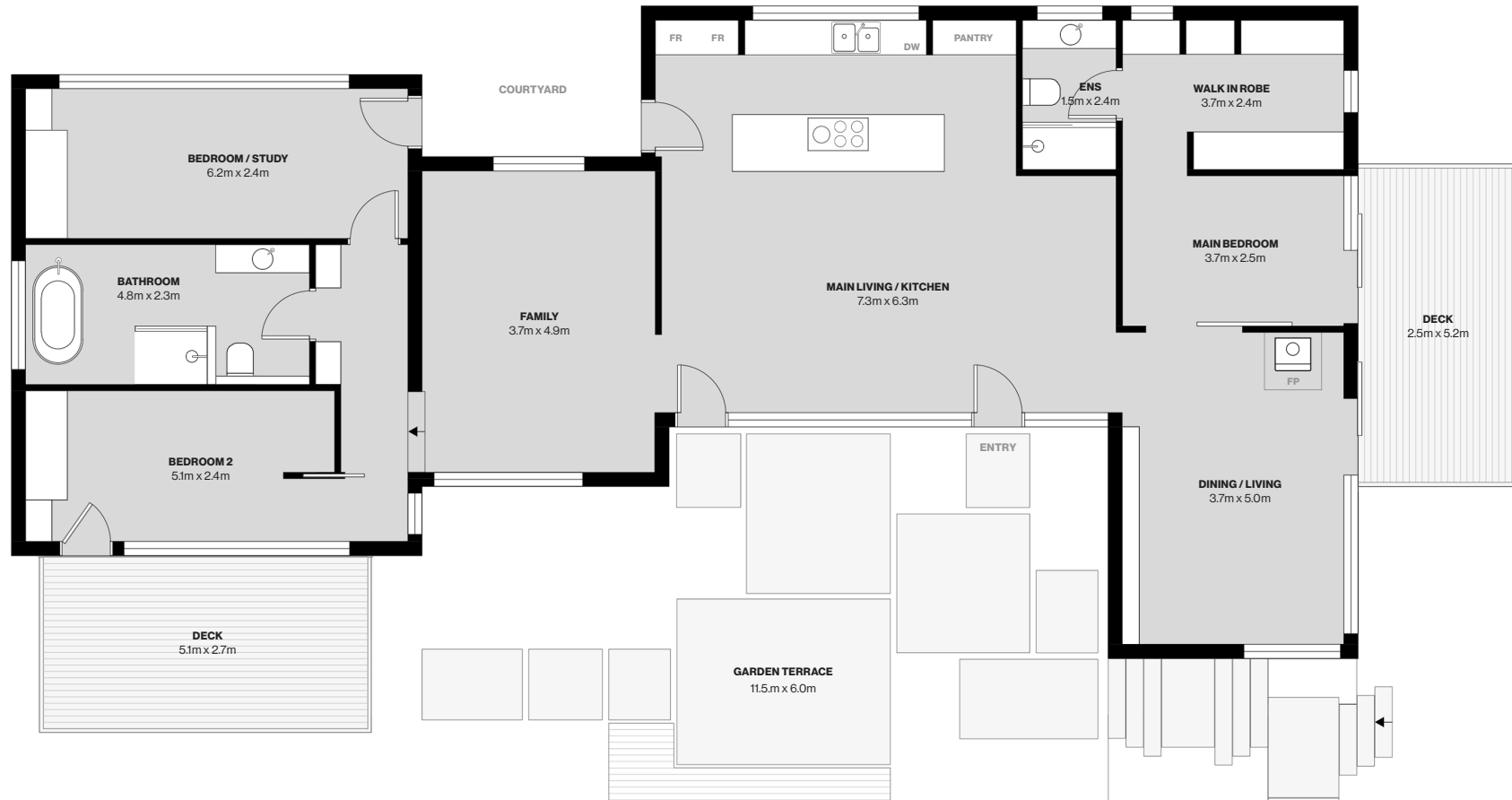


Floor Plan



**Architect: Bryce Mortlock
Schimek House**
98 Elanora Road
Elanora Heights NSW 2101

Designed & Built: 1961-62
Design Architect: Bryce Mortlock
of Ancher, Mortlock & Murray
Builder/Owner: Heidrick (Harry) Schimek
built for his family

Alterations + Additions: 2020
Design Architect: Graeme Bell
of Trace Architects
Builder: Wrightson & Co.
Landscape Design: Fifth Season

3 Bed, 2 Bath, 2 Car (1 covered, 1 off-street) & 3 Living Spaces
Internal area (approx.) 158 sq m (1,700 sq ft) (store not inc.)
Underhouse store & laundry area (approx.) 35 sq m (377 sq ft)
Land area (approx.) 708.2 sq m (7,623 sq ft)
Council: Northern Beaches Council



PLEASE NOTE: WHILST MODERN HOUSE TAKES EVERY CARE IN THE PURSUIT OF ACCURACY, THE PLAN SHOWN IS FOR GENERAL GUIDANCE ONLY. ALL AREAS, MEASUREMENTS AND DISTANCES ARE APPROXIMATE AND NOT TO SCALE. MODERN HOUSE AND OUR VENDOR WILL ACCEPT NO LIABILITY FOR ITS ACCURACY. INTERESTED PARTIES ARE ADVISED TO MAKE THEIR OWN INDEPENDENT ENQUIRIES.

WWW.MODERNHOUSE.CO THE SPECIALIST ESTATE AGENCY FOR ARCHITECT-DESIGNED RESIDENCES Email: sales@modernhouse.co Tel: 1300 814 768